

Handwritten notes and stamps in the top right corner, including a date stamp and some illegible text.

THE ARCHITECTURAL FIRM
INCORPORATED
1601 15th Street, N.W.
Washington, D.C. 20005
Phone: 202-331-1100
Fax: 202-331-1101



KEY-PLAN (1/100)



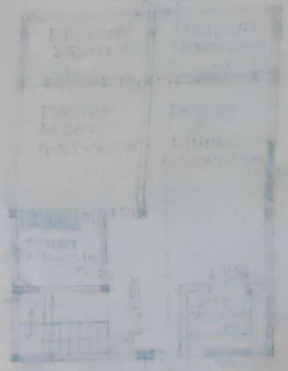
SECTION AT A-B (1/100)



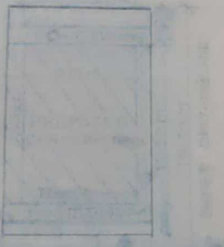
FRONT ELEVATION



FLOOR PLAN (1/100)



FLOOR PLAN (1/100)



Handwritten initials or a signature in the bottom right corner.